

GA-SS Standard Rivet

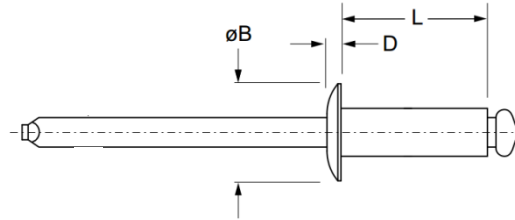
Dome head · Stainless steel body · Stainless steel stem
3.2 mm (1/8") - 6.4 mm (1/4")

Features

- Non-structural blind breakstem rivet designed for a wide range of applications
- Cost effective standard rivet
- Installs quickly and easily

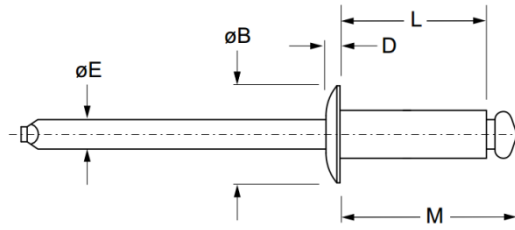
Material

- Body: Stainless steel 304
- Stem: Stainless steel 304



IFI Convention

Part No.	Size ø	Grip Range		Hole Size		L max.	øB -	D -	Shear (typical) kN	Tension (typical) kN
		min.	max.	min.	max.					
GA-SS-41	3.2 (1/8")	0.5	1.6	3.28	3.38	5.4	6.05 ~ 6.65	1.02	1.87	2.36
GA-SS-42		1.6	3.2			7.0				
GA-SS-43		3.2	4.8			8.6				
GA-SS-44		4.8	6.4			10.2				
GA-SS-45		6.4	8.0			11.7				
GA-SS-46		8.0	9.6			13.3				
GA-SS-48		9.6	12.7			16.5				
GA-SS-52	4.0 (5/32")	0.5	3.2	4.06	4.17	7.6	7.52 ~ 8.33	1.27	2.89	3.65
GA-SS-53		3.2	4.8			9.2				
GA-SS-54		4.8	6.4			10.8				
GA-SS-55		6.4	8.0			12.4				
GA-SS-56		8.0	9.6			14.0				
GA-SS-58		9.6	12.7			17.1				
GA-SS-510		12.7	15.9			20.3				
GA-SS-512	15.9	19.1	23.5							
GA-SS-62	4.8 (3/16")	0.5	3.2	4.88	4.98	8.3	9.04 ~ 10.03	1.52	4.23	5.34
GA-SS-63		3.2	4.8			9.8				
GA-SS-64		4.8	6.4			11.4				
GA-SS-65		6.4	8.0			13.0				
GA-SS-66		8.0	9.6			14.6				
GA-SS-68		9.6	12.7			17.8				
GA-SS-610		12.7	15.9			21.0				
GA-SS-612	15.9	19.1	24.1							
GA-SS-614	19.1	22.2	27.3							
GA-SS-616	22.3	25.4	30.5							
GA-SS-82	6.4 (1/4")	0.5	3.2	6.53	6.63	9.5	12.07 ~ 13.34	2.03	7.56	9.34
GA-SS-84		3.2	6.4			12.7				
GA-SS-86		6.4	9.6			15.9				
GA-SS-88		9.6	12.7			19.1				
GA-SS-810		12.7	15.9			22.2				
GA-SS-812		15.9	19.1			25.4				
GA-SS-814		19.1	22.2			28.6				
GA-SS-816	22.3	25.4	31.8							



DIN Convention

Part No.	Size Ø	Grip Range		Hole Size		L max.	ØB -	D -	Shear (typical) kN	Tension (typical) kN
		min.	max.	min.	max.					
GA-SS-3206	3.2 (1/8")	1.0	3.0	3.3	3.4	6	5.8 ~ 6.5	1.2	1.87	2.36
GA-SS-3208		3.0	5.0			8				
GA-SS-3210		5.0	6.5			10				
GA-SS-3212		6.5	8.5			12				
GA-SS-3214		8.5	10.5			14				
GA-SS-3216		10.5	12.5			16				
GA-SS-4006	4.0 (5/32")	1.0	2.0	4.1	4.2	6	7.0 ~ 8.0	1.5	2.89	3.65
GA-SS-4008		2.0	4.0			8				
GA-SS-4010		4.0	6.0			10				
GA-SS-4012		6.0	8.0			12				
GA-SS-4014		8.0	10.0			14				
GA-SS-4016		10.0	12.0			16				
GA-SS-4018	12.0	14.0	18							
GA-SS-4020	14.0	16.0	20							
GA-SS-4808	4.8 (3/16")	1.0	3.0	4.9	5.0	8	8.5 ~ 9.5	1.6	4.23	5.34
GA-SS-4810		3.0	5.0			10				
GA-SS-4812		5.0	7.0			12				
GA-SS-4814		7.0	9.0			14				
GA-SS-4816		9.0	11.0			16				
GA-SS-4818		11.0	13.0			18				
GA-SS-4820		13.0	15.0			20				
GA-SS-4822		15.0	17.0			22				
GA-SS-4825		17.0	20.0			25				
GA-SS-4830		20.0	25.0			30				
GA-SS-6412	6.4 (1/4")	3.5	6.0	6.5	6.6	12	11.5 ~ 13.0	2.2	7.57	9.35
GA-SS-6415		6.0	9.0			15				
GA-SS-6418		9.0	11.5			18				
GA-SS-6422		11.5	15.5			22				
GA-SS-6425		15.5	18.5			25				



Can't find what you are looking for?

We can provide customized finishing and colouring.
Contact your nearest [Gripwell](#) team for assistance!